

Perkins&Will

Fair Park Master Plan Update

Discover Workshop:
Neighborhood Meeting



FAIR PARK FIRST

BRV

BIEDERMAN
REDEVELOPMENT
VENTURES



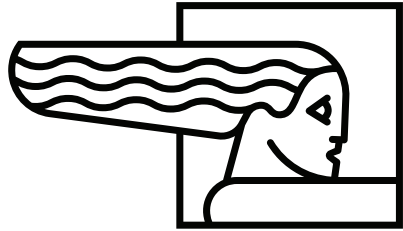
SPECTRA

September 25, 2019
Dallas, Texas

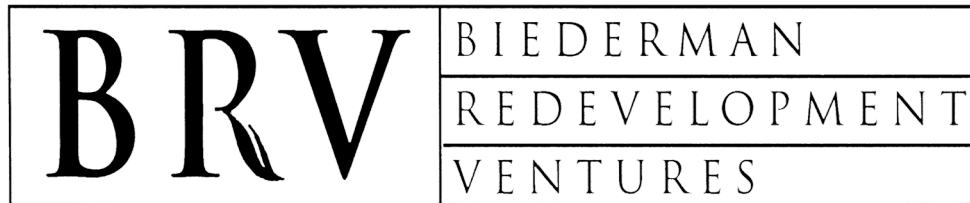
A — INTRODUCTIONS



STUDY PARTNERS:



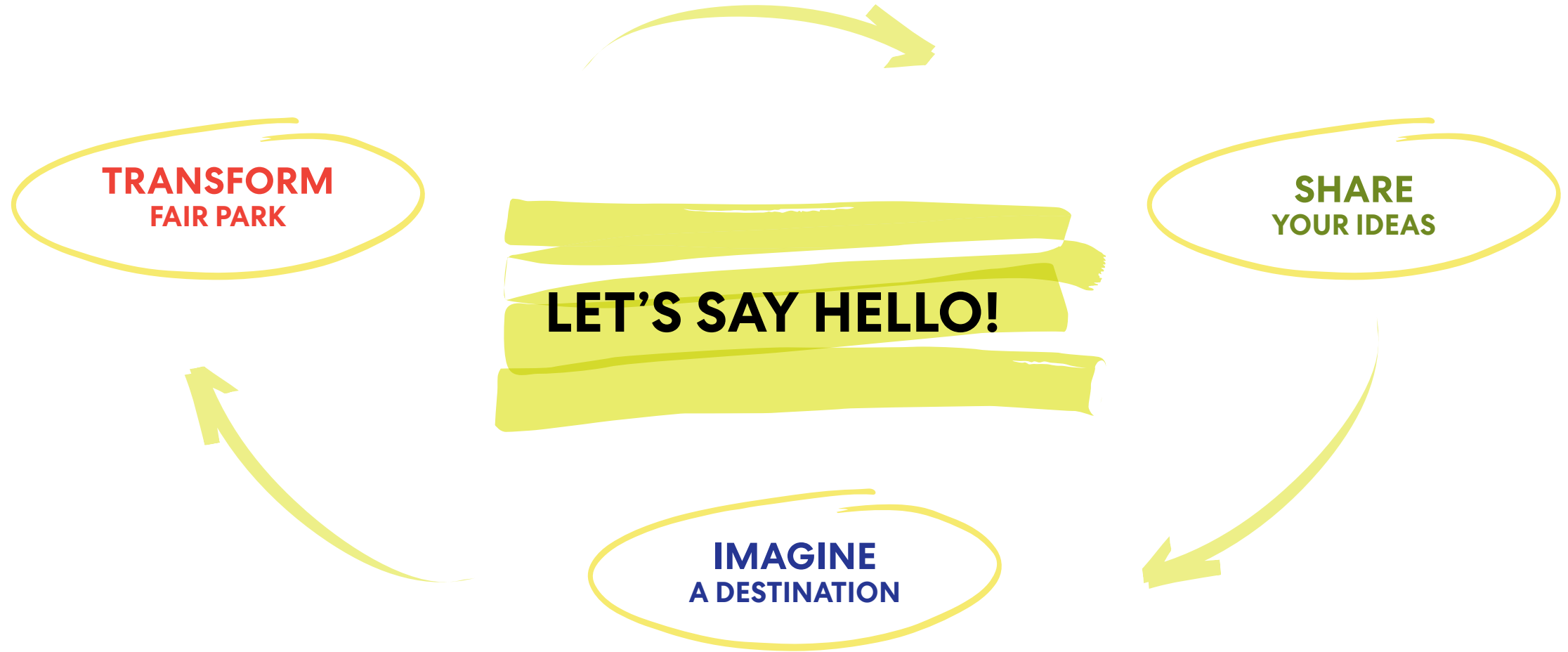
FAIR PARK FIRST



SPECTRA

Perkins&Will

INTRODUCTIONS



AGENDA:

- 6:00 pm — MEETING OPENS
- 6:20 pm — INTRODUCTIONS
- 6:30 pm — PROJECT PRESENTATION
- 6:40 pm — PARK PROGRAMMING
PRIORITIZATION EXERCISE
- 7:05 pm — PROGRAMMING EXERCISE REPORT
OUT
- 7:15 pm — PARK MAPPING EXERCISE
- 7:50 pm — FINAL MEETING REPORT OUT



BIG THINGS HAPPEN HERE

LET'S MAKE BIGGER THINGS HAPPEN.

PERSON PROPERTY

AN INDIVIDUAL'S STATUS as an enslaved person was not his or her identity. The people enslaved by the Madisons were first and foremost mothers, fathers, husbands, cousins, friends, co-workers, neighbors. Struggling against their legal condition as property, they sought to minimize their suffering, maximize moments of joy, and persevere within an oppressive and dehumanizing social system.

C — PROJECT PRESENTATION



SCOPE OF WORK:

OBJECTIVE

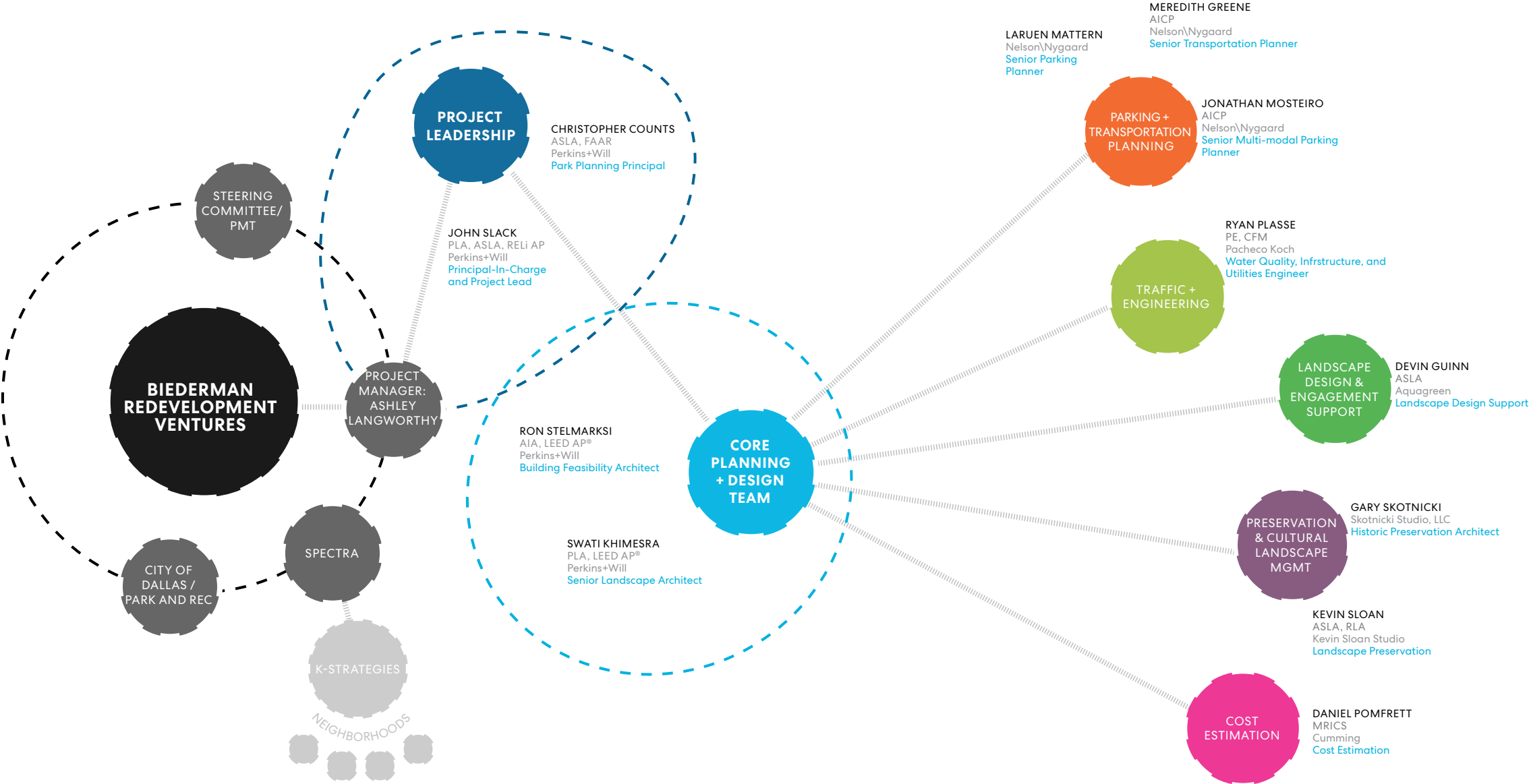
- Plan will build on and update 2003 Fair Park Comprehensive Development Plan (Hargreaves Plan)

PRIORITIES INCLUDE

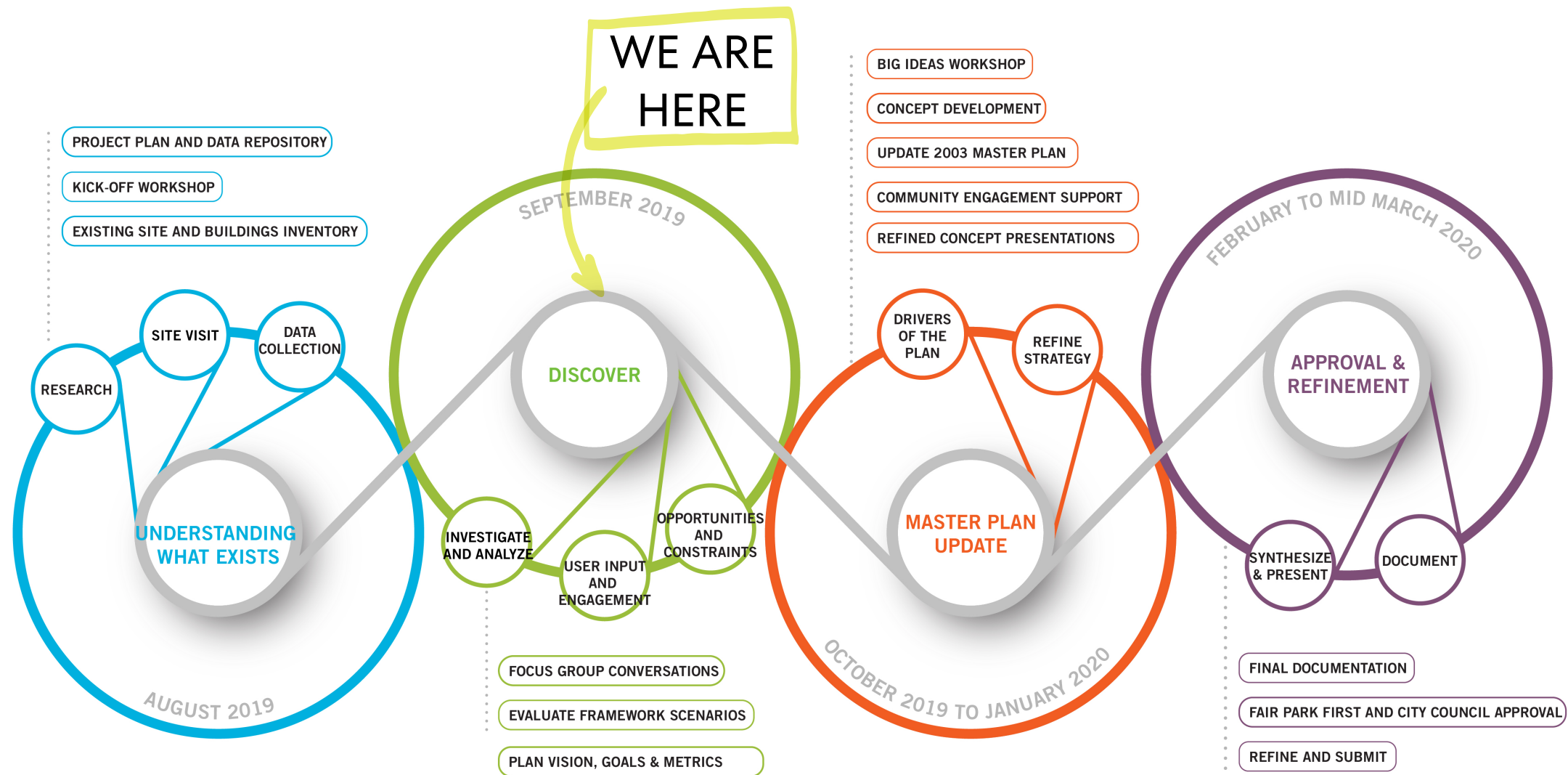
- Bring the park back into Fair Park
- Meet recreational needs of neighborhood and locate neighborhood park
- Improve connectivity within Fair Park and to Fair Park
- Evaluate and restore historic buildings and landscapes
- Evaluate infrastructural needs
- Evaluate and improve parking
- Foster daily recreational use of Fair Park



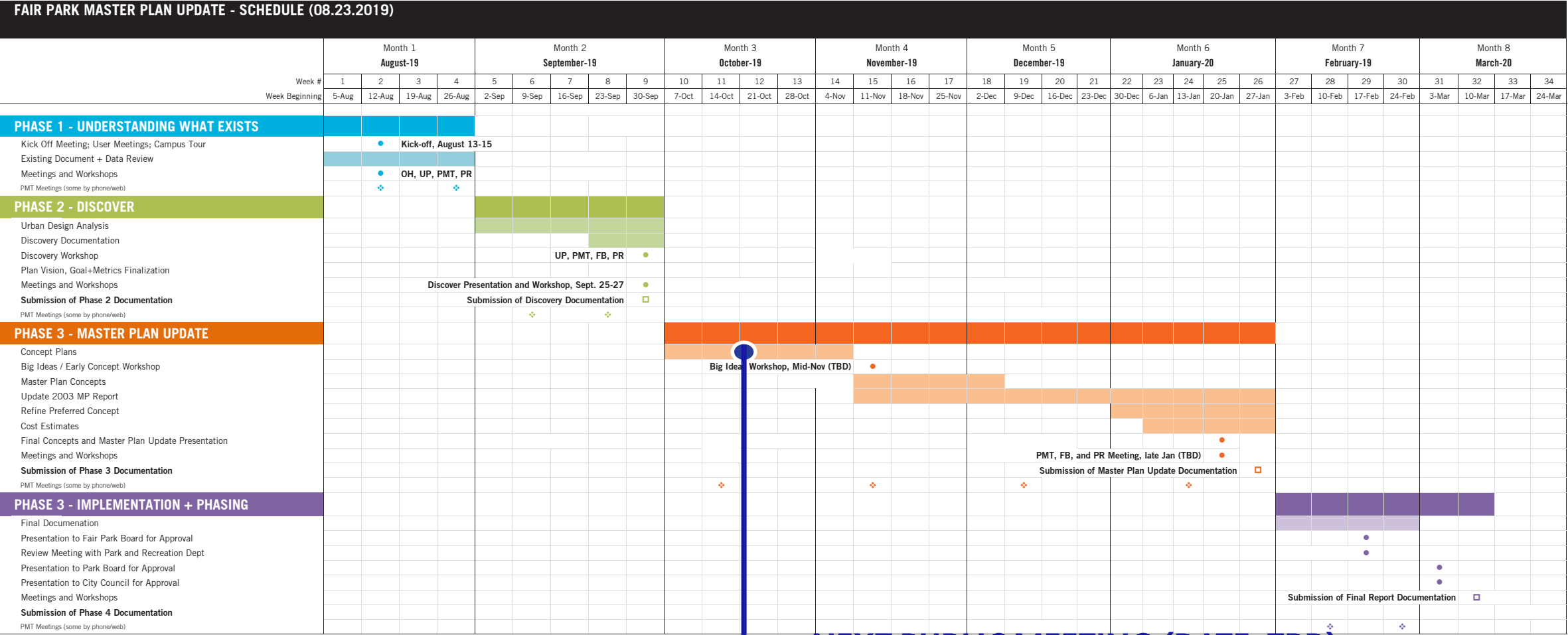
CORE TEAM:



SCHEDULE:



SCHEDULE:



MASTER PLAN UPDATE:

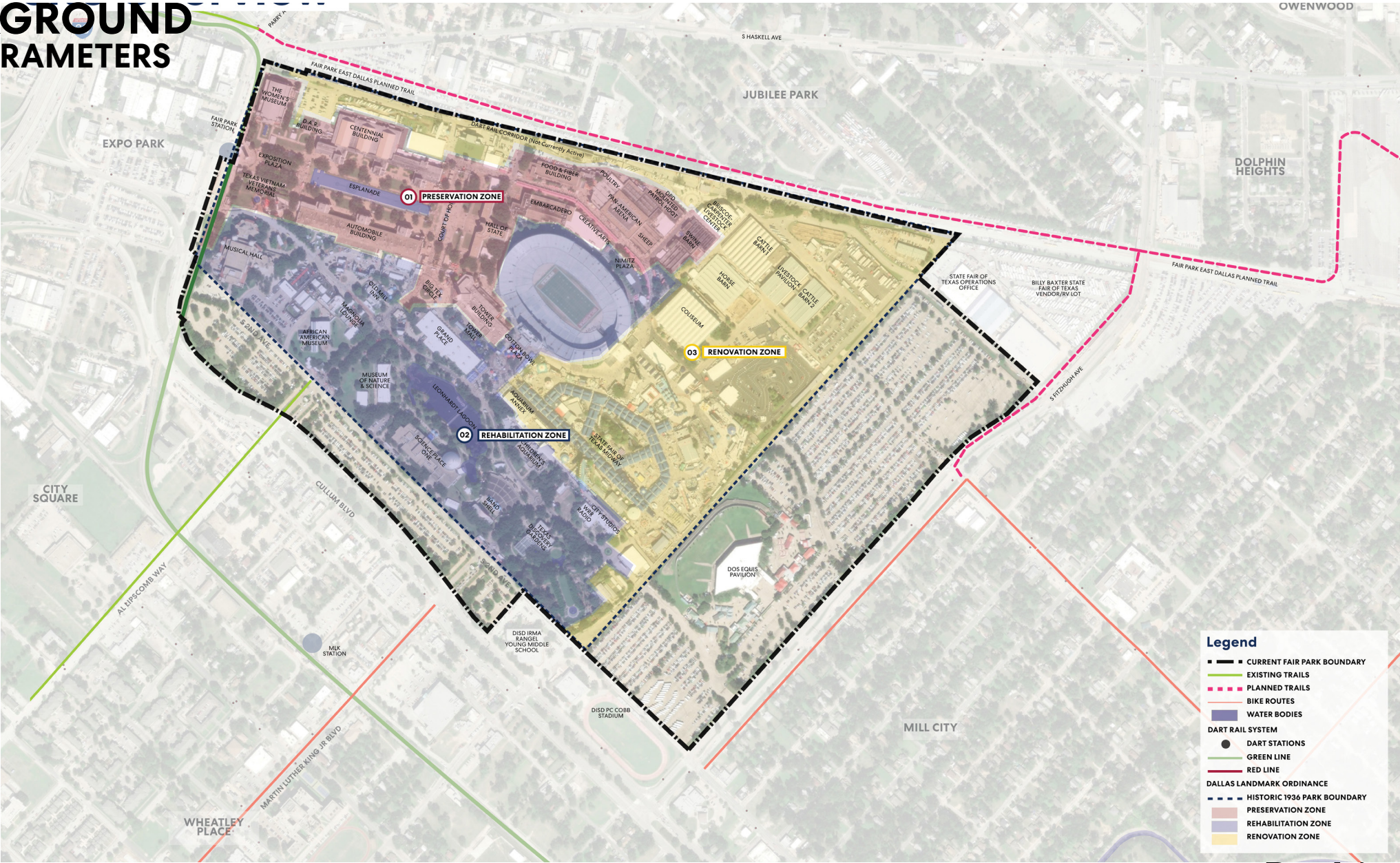
Aug 13-15: Team kick-off meeting and 1st community meeting

Sept 25-26: Discovery workshop

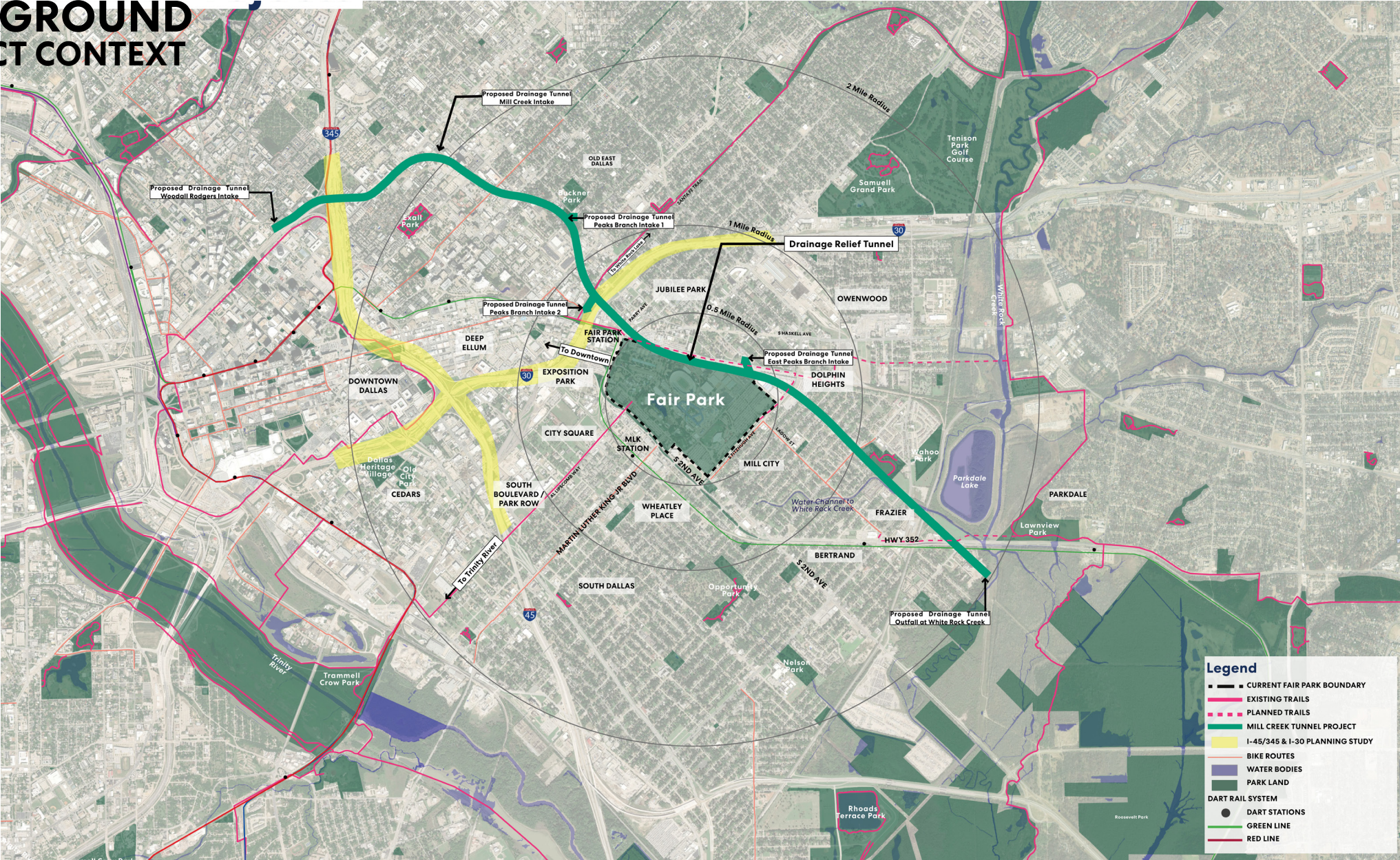
Feb/March 2020: final Master Plan Update and approvals

Spring 2020: neighborhood park design begins

BACKGROUND SITE PARAMETERS



BACKGROUND PROJECT CONTEXT



D — GROUP ACTIVITIES



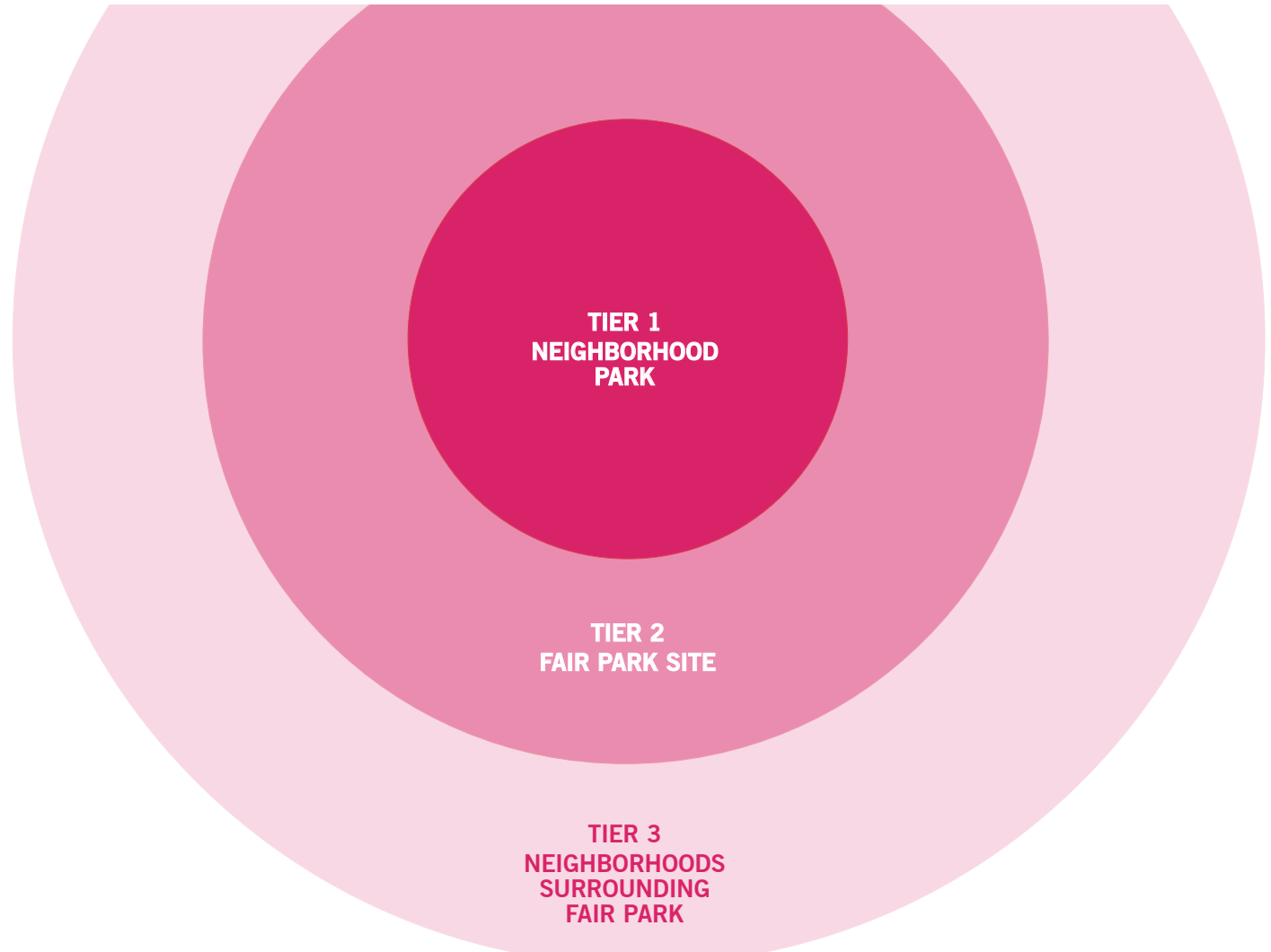
GROUP ACTIVITY 1: PARK PROGRAMMING PRIORITITES

MATERIALS

- Each table has a large ring sheet and a bag of facility chips

PROCESS

- Tables have 15 minutes to place chips on the various rings based on their preferences and group discussion.
- Support facilities such as light fixtures, bike racks, restrooms, etc. are assumed to be present as a part of basic park operation and are not included in this exercise
- There are blank chips so additional site facilities can be added
- Not all the chips have to be used!



GROUP ACTIVITY 1: PARK PROGRAMMING PRIORITITES

PART 1 : 15 MINUTES

- Place chips in various tier rings

PART 2 : 5 MINUTES

- Stop!
- Take a photo of the ring sheet.

PART 3 : 10 MINUTES

- Reduce the rings to no more than **5 per ring**

PART 4 : 10 MINUTES

- Stop!
- Take a photo of the ring sheet.
Report Out



GROUP ACTIVITY 2: PARK MAPPING

GOALS

- Explore opportunities for park/green space in Fair Park
- Explore circulation, access and parking related improvements for Fair Park
- Explore resilience strategies for Fair Park
- Consider implications of 2003 Master Plan to current site conditions
- Compare local, regional and national park precedents to Fair Park



A blue-tinted photograph of a Ferris wheel, likely the London Eye, with a city skyline visible in the background. The Ferris wheel's structure is prominent, with its spokes and capsules visible. The city skyline includes various buildings and a large dome, possibly a stadium. The overall scene is captured in a monochromatic blue hue.

WRAP UP THOUGHTS

Perkins&Will